

LANGLADE COUNTY ICE AGE NATIONAL SCENIC TRAIL CONDITIONS

(As of July 20, 2016)

Due to situations beyond the control of the Langlade County Chapter of the Ice Age Trail Alliance, conditions are constantly changing. Hikers are urged to contact the chapter coordinator (715-623-2645) or the Langlade County Forestry Department Office (715-627-6300) at the Fairgrounds to check on current conditions in advance of any trip on one or more of the segments.

"You Are Here" signs, installed in 1997, are at select sites or where the trail crosses public roads on the Kettlebowl, Lumbercamp, Old Railroad and Parrish Hills segments.



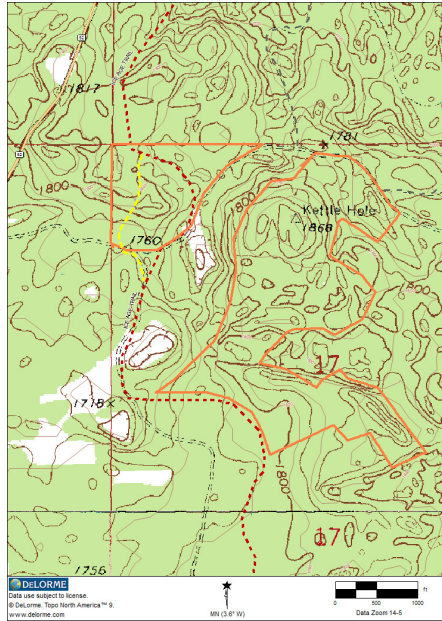
Frostpocket on the Kettlebowl Segment

KETTLEBOWL - Distance: Approximately 13 miles Highway 52 to Polar at Highway 64.

Over half of this segment crosses privately-owned land. Unfortunately, the off-road stretch of trail east of Polar-Price Road to Sherry Road is closed at the landowner's request. Hikers can reach the trail head on Sherry Road by continuing north on Price-Polar and east on Oak/Sherry Roads. The segment passes through some of the highest terrain in Langlade County and features scenic hardwood ridges, frostpockets and Big Stone Hole, a unique glacial feature. The unique boulder filled depression is a short distance from the trail but access is unimproved so caution is advised.

Markings were replaced where needed along with some mowing on the stretch from Sherry Road north to Kettlebowl Ski Hill at Highway 52 last year. This year the stretch was mowed, checked and markings refreshed from the Sherry Road trailhead north one and a half miles to the ATV intersection.

Logging will be occurring along the Kettlebowl segment south of the Kettlebowl Ski Area. Operations could begin in 2016 and possibly into 2018. The affected areas are shown on the following map. Orange outlines the approximate boundary of the areas to be harvested. The yellow dash line represents a rerouted portion of the trail since the original Ice Age Trail shown as a red dash line was established in 1975. Hikers are encouraged to use caution with the logging activity and increased vehicular traffic. The affected stretch is a mile of the segment covered by a 6 mile permanent state conservation and trail easement on land owned by the BTG Pactual Group and managed by Steigerwaldt Land Services of Tomahawk. If any questions contact the chapter coordinator.



AREAS OF KETTLEBOWL SEGMENT TO BE HARVESTED OUTLINED IN ORANGE.



Boulder field on South Slope of Summit Lake Moraine east of Baker Lake - Photo by Lee Auner

LUMBERCAMP - Distance: 12 miles Wisconsin 52 to County Trunk A

Brushing and directional arrows at critical intersections and yellow refresher markings, were refreshed this spring on the stretch from County Trunk A to a half mile east of the Fischer Lake intersection. The stretch from Wisconsin Highway 52 west to Otto Mauk Road has been checked this spring, including some mowing of thick brush just west of Baker Lake.

Recent logging has occurred along portions west of Highway 52. Also a portion of the stretch east from County Trunk S to the Fischer Lake intersection has been damaged by inordinate 4-wheel vehicle use and is scheduled for repair by the county. Caution is advised in these areas.

The boulder strewn slopes near Baker Lake and a former logging camp are features to be observed. The rugged terrain is part of a recessive moraine which stretches from Summit Lake to north of the Village of White Lake.

Local sportsmen have fixed up the stone cellar at the former Norem Lumbercamp site just west of Otto Mauk Road for overnight use. Hikers are encouraged to exercise good trail stewardship if using the historic structure.



Spychalla Lodge-Old Railroad Segment at Jack Lake Cross Country Ski Area, County Trunk J.
OLD RAILROAD - Distance: 9.5 miles County Trunk A to U.S. 45

Over four miles of this segment are being proposed for a county ATV trail in 2017. Planning is underway to re-route affected stretches of the Ice Age Trail.

Recent logging has occurred on this segment, especially in the Veterans Memorial Park and Pence Lake Road areas. Caution is advised.

Markings were also checked and replaced on the stretch from US 45 to just north of the County A trailhead this spring. The stretch from the north crossing of Pence Lake Road to US 45 was mowed and markings checked this month. Logging has occurred along this portion so caution is advised.

Recent rains have raised lake levels in this area. The bog walk at Game Lake on the Old Railroad segment is especially affected by the higher lake levels. Hikers should be aware of this condition and if necessary consider bypassing the bog walk by following the Game Lake Nature Trail around the lake to make the trail connection east or west. Hikers may also encounter water over a short trail stretch along the east shore of Jack Lake which may require a bit of creativity to get around it.

Five features of this segment are Veterans Memorial Park, bog walk, Clearwater Stonehole, the Koepenick-Pearson rail grade and Spychalla Lodge. The latter facility was completed this year and offers shelter for trail users but overnight use is discouraged. There are two primitive campsites along the segment on Game and Jack Lakes.

Veterans Memorial Park is a county park with cabins, developed campground, picnic area, beach and arboretum. Some hikers have used the park as a base camp while hiking through the county.

HIGHLAND LAKES - Distance: 13.5 miles U.S. 45 to County Trunk T

This segment is incomplete and requires a hike along a stretch of Forest and Kleevers Roads in the Town of Upham for approximately 4.5 miles to complete a trip from the eastern trailhead at US 45 to County Trunk T. An outstanding feature of this segment is the Parrish terminal moraine which parallels the trail for over 3 miles. Just north of 5 Points, is a gap cut by the West Branch of the Eau Claire River through the moraine and shaped later for a railroad grade. Just west of 5 points the trail crosses the west branch requiring a ford or a bit of creativity to get around it.

An interesting feature on the road walk along Forest Road is the Bogus Swamp Natural Area. Watch for the marker on the east side of the road.

Logging has occurred along the western portion south from County Trunk T. Hikers are urged to use caution through these areas. In 2009, the Knights Templar Club granted permission for the trail to cross their land on a logging lane north of Kleevers Road. Gates and carsonite trail markings were installed on that stretch in 2010. Yellow refresher markings and directional arrows at critical intersections for this stretch were checked this spring. Recent logging has occurred in the Camp Susan area east of Forest Road so caution is advised for this stretch.

PARRISH HILLS - Distance: 12 miles County Trunk T to Lincoln County Line

In April 2011, a tornado devastated a portion of the segment south of 5 Cent Road. The stretch was rerouted via ATV trails until the chapter is able to re-establish the original trail. The re-route using a portion of the Parrish Game Trail Firelane and Five Cent Road was established in 2012.

Brushing and trail markings were also replaced where needed on the stretch with some mowing from County T to County H last summer. Northwoods Chapter members regularly check the stretch from County Trunk H west to the Lincoln County line.

The segment requires a ford across the Prairie River southeast of Parrish. The bottom of the river is firm and the water level is usually below the knees. Depending on ground water levels, the segment also has several wet crossings which may require a bit of creativity to get around them.

Logging is occurring on county owned land south of the Prairie River ford so caution is advised.