



Together with the Ice Age Trail Alliance, Ice Age Trail Communities enhance appreciation and awareness of the natural and scenic beauty of the thousand-mile Ice Age National Scenic Trail. Visit our Trail Communities to enjoy small-town hospitality, local supper clubs, hometown bakeries, farm-to-table eateries, and sites highlighting Wisconsin's cultural heritage.

For current trail conditions, to connect with local volunteers, or to plan your Ice Age Trail hike, visit iceagetrail.org.

The **City of Verona** is a growing, vibrant community with many recreational, cultural, and business amenities. Taste our amazing local cuisine, hike or bike our trails, sample an award-winning beer, or tee off at our PGA-rated golf course. The Ice Age Trail in this area weaves back and forth between two landscapes: lands covered by the Green Bay Lobe and the unglaciated Driftless Area.



TRAVEL
WISCONSIN

WHERE TO HIKE

Unless otherwise noted, dogs are allowed on the Ice Age Trail and should be under control and leashed at all times.

MADISON SEGMENT

(3 miles)

This segment leads hikers along the outskirts of town through a scenic golf course, residential neighborhoods, and native prairies. Two interpretive signs about the presence of glaciers in the area can be found on this segment.



VERONA SEGMENT

(6.4 miles)

This suburban segment passes through three county parks and links up to a variety of hiking and biking trails in the Verona area. Several kettle ponds—remnants of the area's glacial history—are found in the Ice Age Trail Alliance's Moraine Kettles Preserve. Part of the Trail (from Military Ridge State Trail to Whalen Rd.) is detoured through Spring 2022. Follow marked detour route, which takes you through downtown Verona.

BROOKLYN WILDLIFE SEGMENT

(3.3 miles)

Hikers follow a rolling course of glacial outwash and bedrock through the Brooklyn State Wildlife Area. The segment highlights meadows, woodlands, oak savannas, and colorful prairies.

EATS & TREATS

Visit a bike shop and fuel up on coffee or beer at **N + 1 Cafe**. Enjoy fresh baked goods and roasted coffee at **Grace Coffee Co.** Find a juicy burger, fresh pizza, or classic Italian at **Draft House Bar & Restaurant**, **Sugar River Pizza Company**, and **Avantis Italian Restaurant & Pub**. After a satisfying lunch or dinner, pick out your favorite ice-cream flavor, shake, malt, or smoothie at **Icki Sticki**. Discover your next favorite locally crafted beer at **Wisconsin Brewing Company** or **Hop Haus Brewing Company**.

SHOPS & STOPS

Find a one-of-a-kind gift or a vacation keepsake at one of Verona's specialty stores. **The Sow's Ear** is a cheerful yarn & knitting shop that includes a café serving hot drinks, breakfast, and sandwiches. Make a stop at **Miller & Sons Supermarket** to load up on snacks before or after your hike. Verona is also home to several convenience stores and pharmacies to ensure you have everything you need. Verona has all the necessities for your stay, including **Blain's Farm & Fleet** and **Dorn True Value**.

STAY & PLAY

After a day of hiking and exploration, put your feet up at one of these lodging options:

- **Fairfield Inn & Suites**
- **Holiday Inn Express & Suites**
- **Hyatt Place**
- **Super 8**



RECREATION & RELAXATION

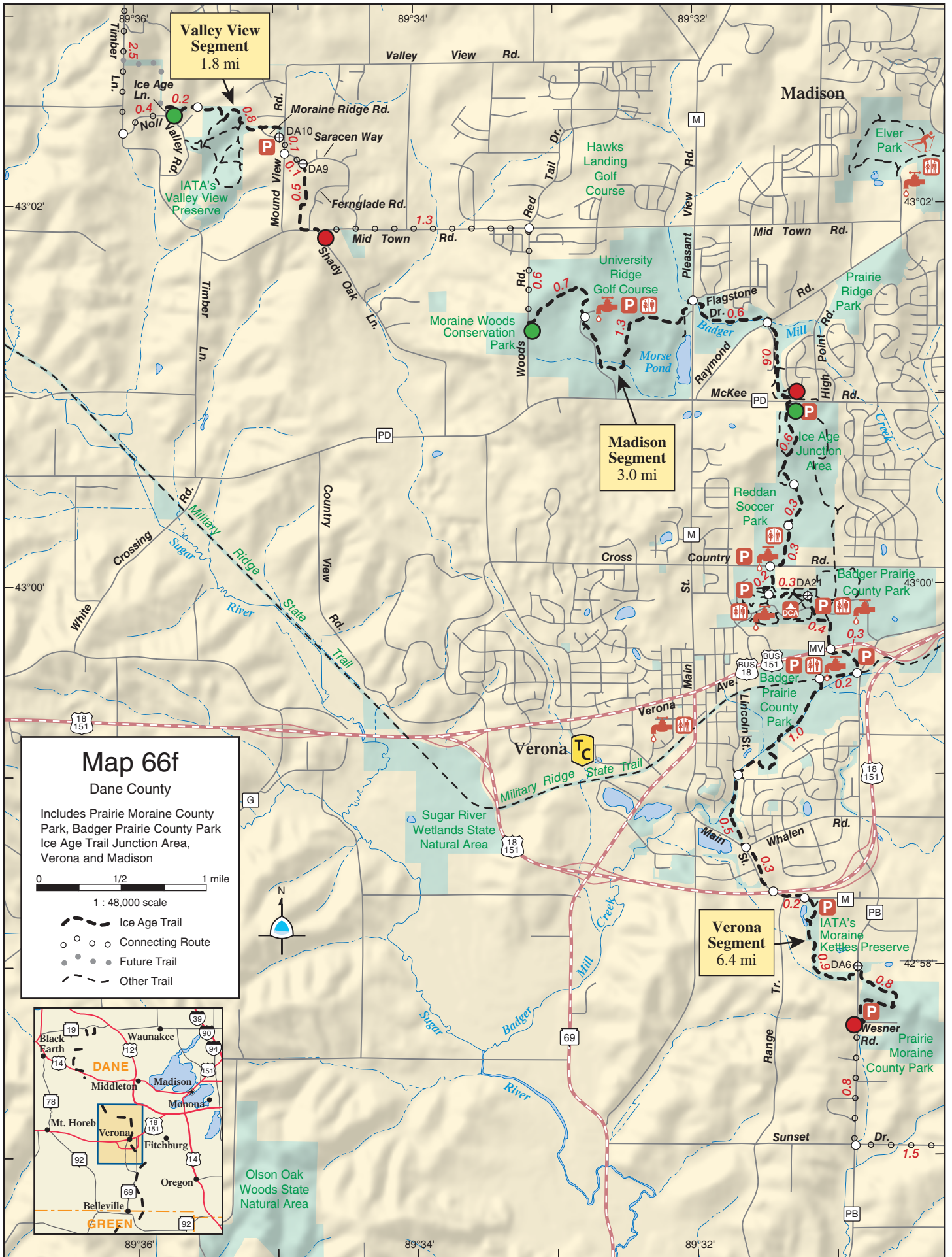
Adjacent to Verona is the 317-acre **Badger Prairie County Park**, which has a shelter facility, play fields, mountain bike trails, a playground, two dog parks, and provides access to **Military Ridge State Trail** and a segment of the Ice Age National Scenic Trail. Hop on the Military Ridge State Trail, a 41-mile gravel hiking and biking trail, which begins east of Verona and connects to Governor Dodge State Park in Iowa County. **Epic**, a thriving software design company, is a destination in itself. Take a self-guided tour through the expansive Epic premises that features creatively designed structures such as a staircase surrounded by bamboo, underground tunnels, skyways, a wizard-themed Harry Potter-esque room, a giant auditorium five stories underground, and more.

For more ideas, visit: visitveronawi.com

GET INVOLVED

Contact the **Dane County Chapter** of the Ice Age Trail Alliance, a dedicated group of volunteers who build, maintain, and promote the beautiful segments of the Ice Age Trail throughout Dane County.

The chapter's "**Dane Drifters**" hiking program recognizes hikers who have walked all 38.5 miles of Ice Age Trail segments and the *optional 29 miles* of connecting routes in Dane County.



Map 66f

Dane County

Includes Prairie Moraine County Park, Badger Prairie County Park, Ice Age Trail Junction Area, Verona and Madison

0 1/2 1 mile

1 : 48,000 scale

- Ice Age Trail
- Connecting Route
- Future Trail
- Other Trail

Map 67f

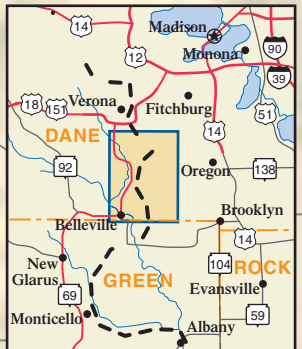
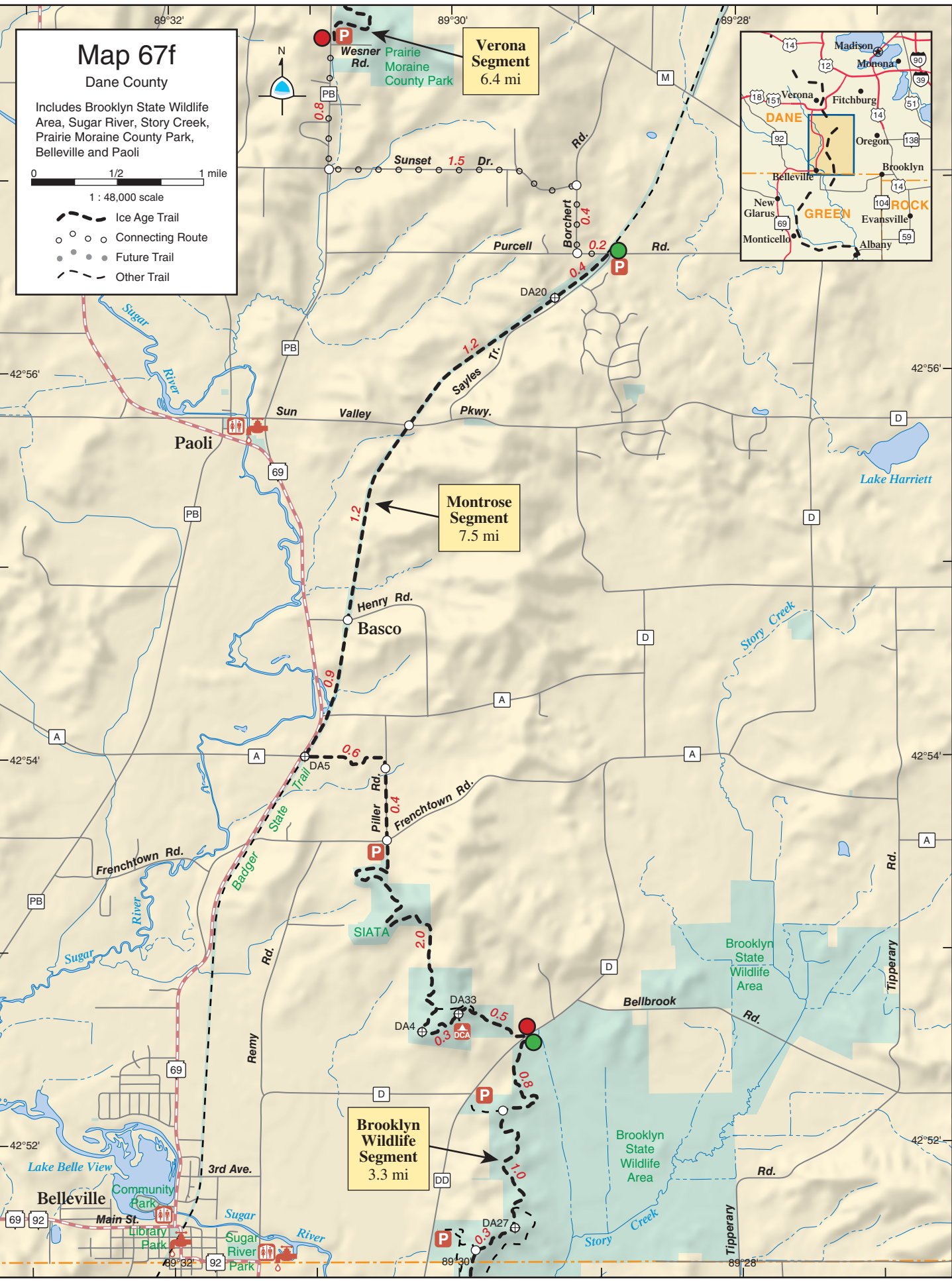
Dane County

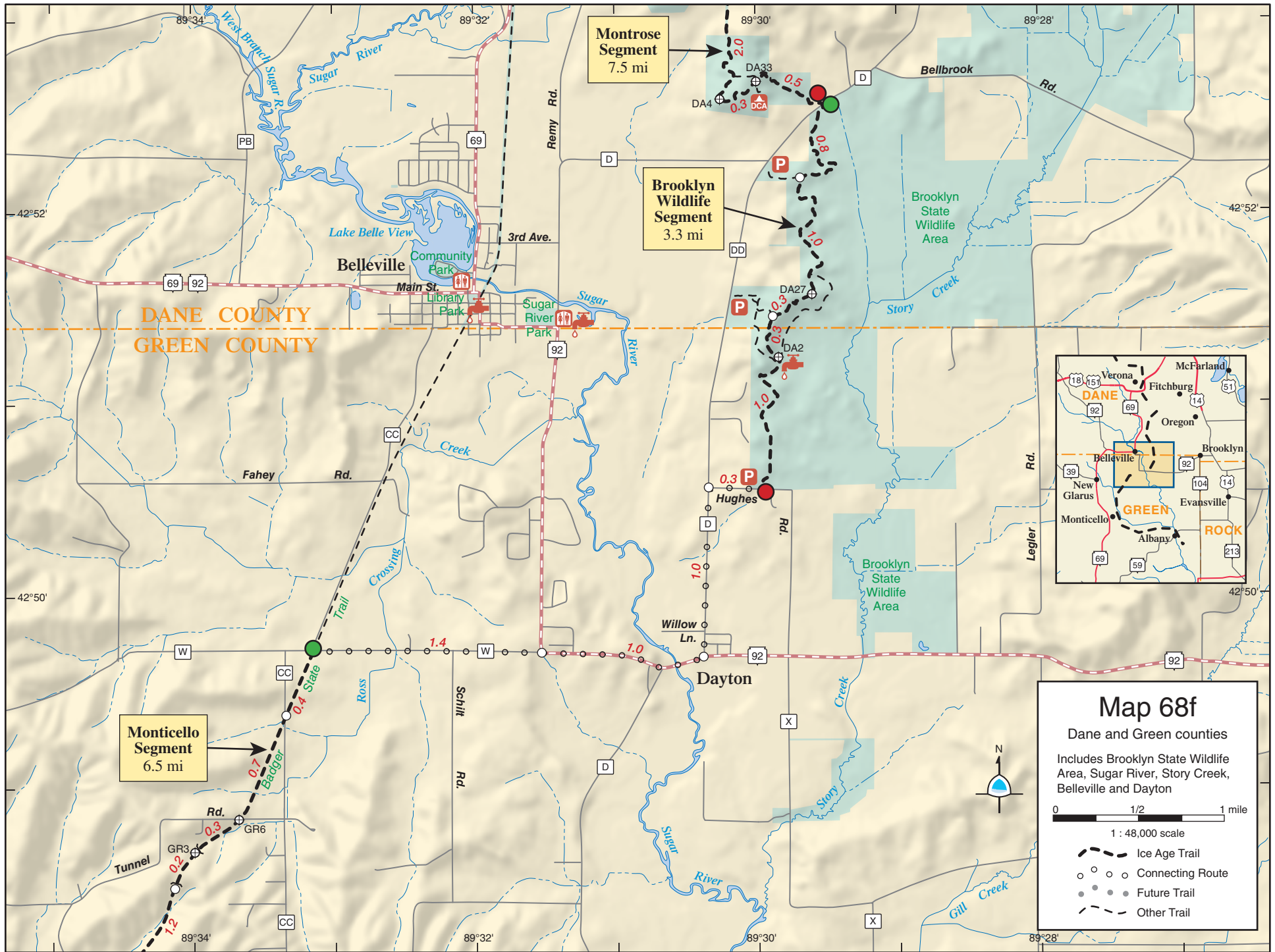
Includes Brooklyn State Wildlife Area, Sugar River, Story Creek, Prairie Moraine County Park, Belleville and Paoli

0 1/2 1 mile

1 : 48,000 scale

- Ice Age Trail
- Connecting Route
- Future Trail
- Other Trail





Map 68f
Dane and Green counties
Includes Brooklyn State Wildlife Area, Sugar River, Story Creek, Belleville and Dayton

0 1/2 1 mile
1 : 48,000 scale

- Ice Age Trail
- Connecting Route
- Future Trail
- Other Trail